

## BERMUDA

## HOTELS•MOTELS•INNS

**Country Dialling Code (Tel/Fax): ++1-441**

**Bermuda Department of Tourism:** Global House, 43 church Street, Hamilton HM 12 Tel 292-0023 Fax 292-7537 E-mail [travel@bermutatourism.com](mailto:travel@bermutatourism.com) Website: [www.bermutatourism.com](http://www.bermutatourism.com)

**Capital:** Hamilton **Time:** GMT – 4 (Summer time GMT – 3)

**Background:** Bermuda was first settled in 1609 by shipwrecked English colonists headed for Virginia. Tourism to the island to escape North American winters first developed in Victorian times. Bermuda has developed into highly successful offshore financial center. A referendum on independence was soundly defeated in 1995.

**Location:** North America, group of islands in the North Atlantic Ocean, east of North Carolina (US)

**Map References:** North America

**Area:** total: 58.8 sq km land: 58.8 sq km water: 0 sq km

**Climate:** subtropical; mild, humid; gales, strong winds common in winter

**Terrain:** low hills separated by fertile depressions  
Natural resources: limestone, pleasant climate fostering tourism

**Population:** 62,997 (July 2000 est.)

**Nationality:** noun: Bermudian(s) adjective: Bermudian

**Religions:** non-Anglican Protestant 39%, Anglican 27%, Roman Catholic 15%, other 19%

**Languages:** English (official), Portuguese

**Economy:** Bermuda enjoys one of the highest per capita incomes in the world, having successfully exploited its location by providing financial services for international firms and luxury tourist facilities for 360,000 visitors annually. The tourist industry, which accounts for an estimated 28% of GDP, attracts 84% of its business from North America. The industrial sector is small, and agriculture is severely limited by a lack of suitable land. About 80% of food needs are imported. International business contributes over 60% of Bermuda's economic output; a failed independence vote in late 1995 can be partially attributed to Bermudian fears of scaring away foreign firms. Government economic priorities are the further strengthening of the tourist and international financial sectors.

**Industries:** tourism, finance, insurance, structural concrete products, paints, perfumes, pharmaceuticals, ship repairing

**Currency:** 1 Bermudian dollar (Bd\$) = 100 cents

**Railways:** 0 km

**Highways:** total: 225 km paved: 225 km unpaved: 0 km (1997 est.) note: in addition, there are 232 km of paved and unpaved roads that are privately owned

**Ports and Harbors:** Hamilton, Saint George

**Airports:** 1 (1999 est.) Airports - with paved runways: total: 1 2,438 to 3,047 m: 1 (1999 est.)

**Visa:** not generally required for stays upto 6 months. Return tickets essential

**Duty Free:** goods permitted: 200 cigarettes and 50 cigars and 454g of tobacco, 1137ml of alcohol

**Health:** health insurance is essential as health costs are very high.

Save money and time book **Intercontex** online  
[www.hyperlinkhotels.com](http://www.hyperlinkhotels.com)

**HAMILTON**

**KINGSTON HOUSE B&B**, 5 Turnstile Lane, Hamilton HM 06, Bermuda, (441) 295-6597, [www.bbbermuda.com](http://www.bbbermuda.com)

**ROYAL PALMS HOTEL**, 24 Rosemont Avenue, Pembroke, Hamilton HM 06, Bermuda, (441) 292-1854, [www.royalpalms.bm](http://www.royalpalms.bm)

**TUCKER'S POINT HOTEL & SPA**, 60 Tucker's Point Drive, Hamilton Parish, HS 02 Bermuda, T:441.298.4000, [wzapach@tuckerspoint.com](mailto:wzapach@tuckerspoint.com), <http://www.tuckerspointhotelandspa.com>

**THE FAIRMONT HAMILTON PRINCESS**, 76 Pitts Bay Road Pembroke, Hamilton, Bermuda, HM 08, TEL (441) 295-3000, FAX (441) 295-1914, E-MAIL [hamilton@fairmont.com](mailto:hamilton@fairmont.com), <http://www.fairmont.com/hamilton>



P.O. Box HM 290 Hamilton HM AX, Bermuda  
Telephone: (441) 295-1640  
Fax: (441) 295-5904  
<http://www.rosedon.com>

Charming Small Hotel in Old Manor House just off Pitts Bay Road in a quiet setting in Pembroke among tropical gardens, a few minutes walk from Hamilton, opposite Princess Hotel – Tastefully decorated large rooms in Main House and Garden Poolside units, all with air-conditioning, phone and tiled bath – Garden Pool and Pati – Free transfer to Elbow Beach for and intimate for clients seeking central location.

**THE SANDPIPER**

**P.O. Box: 685  
Hamilton 5**

**Tel: +1-441 296-7093  
Fax: (441) 236-3898**

[sandpiper@ibl.bm](mailto:sandpiper@ibl.bm)  
[www.sandpiperbda.com](http://www.sandpiperbda.com)

Modern 2-story Apartment Hotel located in residential area on South Shore in Warwick, minutes away from major restaurants, beaches and shopping district. One-bedroom units or studio apartments with kitchen, bedroom and private bath. Fully air conditioned. Pool. Whirlpool.

**PAGET**

**COCO REEF RESORT BERMUDA**, Paget, [info@cocoreef.bm](mailto:info@cocoreef.bm), <http://www.cocoreefbermuda.com>  
**ERITH GUEST HOUSE**, 15 Pomander Road, Paget PG 05, Bermuda, Tel: (441) 232-1827 or (441) 535-6369, Email: [erith@therock.bm](mailto:erith@therock.bm), <http://www.erithguesthouse.com>  
**FOURWAYS INN & COTTAGE COLONY**, Middle Road, Paget, Bermuda, (441) 236-6517, [info@fourways.bm](mailto:info@fourways.bm), <http://www.fourwaysinn.com>  
**GRAPE BAY BEACH HOTEL**, P.O. Box PG 174, Paget PG BX, Bermuda, Telephone: 441-236-2023, Toll Free: 800-548-0547, Fax: 441-236-2486, [reservations.grapebay@logic.bm](mailto:reservations.grapebay@logic.bm), <http://www.grapebay.com>  
**HORIZONS AND COTTAGES**, 33 South Shore Road, Paget, PG04, Bermuda, Tel: 441-236-0048, Fax: 441-236-1981, <http://www.horizonscottages.com>  
**NEWSTEAD BELMONT HILLS HOTEL**, 27 Harbour Road, Paget, Bermuda PG02, Tel: (441) 236-6060, Email: [sales@belmonthills.com](mailto:sales@belmonthills.com), <http://www.newsteadbelmonthills.com>  
**THE WHARF EXECUTIVE SUITES**, 1 Harbour Road Paget, PG01, Bermuda, ph. 441 232 5700, <http://www.wharfexecutivesuites.com>

**SANDY'S PARISH**

**CAMBRIDGE BEACHES** Cottages Somerset Sandy's Parish Bermuda Tel: +1-444(809) 4-0331, Fax: 00441 234 5799 Tlx: Ba 250 Cbl: Beaches, [Res@Cambeach.Bm](mailto:Res@Cambeach.Bm), <http://www.cambridgebeaches.com>  
**WILLOWBANK HOTEL & CONFERENCE FACILITY**, 126 Somerset Road, Sandys Ma 06, Bermuda, T:441.234.1616, email: [reservations@willowbank.bm](mailto:reservations@willowbank.bm), <http://www.willowbank.bm>

**SMITHS PARISH**

**PINK BEACH CLUB** 116 South Shore Road Smiths Parish HSO1 SMITHS PARISH BERMUDA TEL: +1 (441) 293 1666 FAX: +1 (441) 293 8935 [www.sih.com/pinkbeach/](http://www.sih.com/pinkbeach/)

**SOMERSET BRIDGE HOTEL**

**Sandays 9 - 20  
Bermuda**

**Tel: +1-441-294-1042**

Modern Apartment Hotel in Sandys Parish, a few steps from Somerst Bridge on Elys Harbour and the Hamilton Ferry. Bus stop at door. Comfortable, self-contained units in contemporary designs, all with air-conditioning, kitchen, hide-away Murphy beds and private balconies overlooking with waterfront. Restaurant serving breakfast, lunch and dinner. Pool. Private beach and dock. Restaurants and golf nearby. Quiet homely atmosphere.



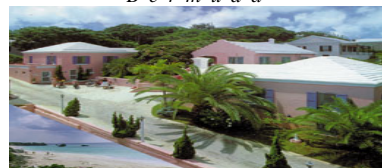
**SOUTHAMPTON**

**GREENE'S GUEST HOUSE**, 71 Middle Road, PO Box SN 395, Southampton SNBX, Bermuda, Tel: (441) 238-0834, Fax: (441)238-8980, <http://www.thegreenesquesthouse.com>  
**POMPANO BEACH CLUB**, 36 Pompano Beach Road, Southampton SB 03 Bermuda, Telephone 441-234-0222, Fax 441-234-1694, [pompano@ibl.bm](mailto:pompano@ibl.bm), <http://www.pompanobeachclub.com>  
**THE FAIRMONT**, 101 South Shore Road, Southampton, Bermuda, SN02, TEL (441) 238-8000, FAX (441) 238-8968, [southampton@fairmont.com](mailto:southampton@fairmont.com), <http://www.fairmont.com/southampton>  
**THE REEFS HOTEL & CLUB**, 56 South Shore Road, Southampton SN02, Bermuda, [humanresources@thereefs.bm](mailto:humanresources@thereefs.bm), <http://www.thereefs.com>  
**TUCKER'S TOWN**  
**CASTLE HARBOUR Marriott** P.O. Box HM 841 Hamilton, Bermuda HMCX  
**TUCKER'S TOWN BERMUDA** TEL: (441) 293 2040 FAX: (441) 293 8288  
**PINK BEACH CLUB**, 116 South Shore Rd, Tucker's Town, Bermuda, Tel: 203 655 6161 Fax: 203 655 2797, [reservations@pinkbeach.com](mailto:reservations@pinkbeach.com), <http://www.pinkbeach.com>



**VALLEY COTTAGES & APARTMENTS**

P. O. Box 214  
Paget 6, East  
Bermuda



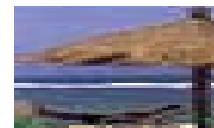
**Tel: + + 1 - 4 4 1 2 9 2 0 6 2 8**

A Modest tourist Class Cluster of Units situated 10 minutes from Elbow Beach, near market, bus stop, ferry, cycle shop and city of Hamilton – Accommodations in 2 and 3 bedroom cottages and air-conditioned studio apartments, each with equipped kitchen, bath and phone and opening onto garden – Maid Service.



**WHITE SANDS HOTEL & COTTAGES**

P. O. Box 174  
Paget 6-15  
Bermuda



**Tel: + + 1 - 4 4 1 2 9 6 - 2 0 2 3**

Small Distinctive First Class resort overlooking Grape Bay Beach on South Shore – 6 minutes from Hamilton – 10 miles from airport – Duplex cottages, main house or terrace wing, all with air conditioning, phone and Terrace – Golf and tennis arrangements – Convenient to shopping – British ambience.



## WARWICK

## ASTWOOD COVE APT RESORT

49 South Shore  
Warwick  
P.O. Box: 7-06



Tel: +1-441 296-0984

Relaxed Apartment Resort overlooking the South Shore – 4 miles from Hamilton. All units with air conditioned/heat, phone, radio, bedroom/sitting room, fully equipped kitchenette, private bath and patio or verandah. 6 suites. Pool. Sauna. (extra charge) Barbeque. Garden. Orchard. Self-service laundry. 3-minutes walk to beaches. Restaurants, golf, tennis and horseback riding nearby.



Golf and Beach Club  
Warwick  
Parish 7-20  
Bermuda

Tel: +1-441 295-1301

<http://www.bermuda-golfing.com>

Resort Hotel and Country Club, 30 minutes from Airport. Bath, phone, Restaurants, Lounge, Night Club, Pool, Golf, Tennis, Beach, Sailing, Fishing, Water Skiing.



**CLAIRFONT APARTMENTS**, P.O. Box WK 85, Warwick WK BX, Bermuda.  
<http://www.clairfontapartments.bm>

**SANDPIPER GUEST APARTMENTS**, South Shore Road, Warwick, Bermuda,  
Bermuda, Tel: (441) 236-7093, Fax: (441) 236-3898, <http://www.sandpiperbda.com>

**SUNSCAPE BERMUDA**, Call: 1-441-236-2824, Warwick, Bermuda,  
[info@sunscapebermuda.com](mailto:info@sunscapebermuda.com), <http://www.sunscapebermuda.com>

**SURF SIDE BEACH CLUB**, P.O. Box WK 101, Warwick WK HX, Bermuda,  
Telephone: 441-236-7100, Fax: 441-236-9765, [surf@ibl.bm](mailto:surf@ibl.bm),  
<http://www.surfsidebermuda.com>

**THE BREAKERS** P.O. BOX 250, SOUTH SHORE, WARWICK, WK. BX, BERMUDA,  
TEL. 441-236-5031, FAX. 441-236-8784, [mermaid@ibl.bm](mailto:mermaid@ibl.bm),  
<http://www.thebreakers.bm>

## AIRLINES/HELICOPTERS/AIRPORTS

**BERMUDA HELICOPTERS LTD.**, 74 Pitts Bay Rd., Pembroke, Bermuda, HM 06,  
Phone: 441 295 0416, Fax: 441 295 2539

**BERMUDA INTERNATIONAL AIRPORT (BDA/TXKF)** Tel: (Dept of airport  
ops) +1 441 293-2470, Fax: +1 441 293-4504, e-mail: [dao@gov.bm](mailto:dao@gov.bm)

**BRITISH AIRWAYS**, Waterside PO Box 365 Harmondsworth, UB7 0GB Tel: 0044  
208 875 95 51 (Local 08457 79 99 77) Fax: 0044 208 562 99 30 Web site:  
[www.britishairways.com](http://www.britishairways.com) Main operational base: Heathrow + Gatwick

## TOURIST OFFICES INFO.

**AMERICAN AIRLINES:** Hamilton. Tel: +1-441-293-1420

**EASTERN AIRLINES:** Hamilton. Tel: +1-441-25900

## RESTAURANTS &amp; BARS

## HAMILTON

**BARRACUDA GRILL**, 5 Burnaby Hill, Hamilton, HM BX, Tel: 441 292 1609,  
Fax: 441 292 8354, [barracuda@irg.bm](mailto:barracuda@irg.bm), <http://www.barracuda-grill.com>

**BISTRO J**, Chancery Lane, Hamilton HM 12 Bermuda, Tel: (441) 296  
8546, Fax: (441) 292 7074, Web site: [www.bistroj.bm](http://www.bistroj.bm)

**BOLERO BRASSERIE**, Front St, Hamilton, Bermuda, (441) 292-4507,  
[www.bolebrasserie.com](http://www.bolebrasserie.com)

**CHOPSTICKS**, 88 Reid Street, Hamilton, Pembroke Parish, Telephone: 292-  
0791, Fax: 292-9834, Web site: [www.bermudarestaurants.com](http://www.bermudarestaurants.com)

**FLANAGAN'S IRISH PUB & RESTAURANT**, Front St, Hamilton,  
Bermuda, (441) 295-8299, [www.flanagans.bm](http://www.flanagans.bm)

**HARLEYS**, P.O. Box HM 837 76 Pitts Bay Road Pembroke HM 11 Hamilton,  
Bermuda, HM CX, T. (441) 295-3000, F. (441) 295-1914, email:  
[hamilton@fairmont.com](mailto:hamilton@fairmont.com)

**HOG PENNY**, 5 Burnaby Hill, Hamilton, Pembroke Parish, Tel: 292 2534, Fax:  
295 1339, Web site: [www.hogpennypub.com](http://www.hogpennypub.com)

**HOUSE OF INDIA**, Park View Plaza, 57 North St., Hamilton HM 17,  
Telephone: (441) 295-6450, Fax: (441) 295-6444, <http://www.bermudayp.com>

**LA COQUILLE**, Bermuda Underwater Exploration Institute, East Broadway,  
Hamilton, Pembroke Parish, Tel: 292 6122, Fax: 292 8825, Web site: [www.diningbermuda.com](http://www.diningbermuda.com)

**L'ORIENTAL**, 32 Bermudiana Road, Hamilton, Pembroke Parish (Japanese)  
Tel: 296 4477, Fax: 295 8977, [www.diningbermuda.com](http://www.diningbermuda.com)

**PORT O CALL**, 87 Front Street, Hamilton, Pembroke Parish, Tel: 295 5373,  
Fax: 292 7074, Web site: [www.portocall.bm](http://www.portocall.bm)

**SOMERSET COUNTRY SQUIRE**, 10 Mangrove Bay Road, Somerset  
Village, Sandys Parish, Tel: 234 0105, Fax: 234 2304



Swizzle Inn, Baileys Bay  
3 Blue Hole Hill  
Baileys Bay CR 04  
Bermuda

Telephone: (441) 293-1854

Fax: (441) 293-4422

Email: [info@swizzleinn.com](mailto:info@swizzleinn.com)

[www.swizzleinn.com](http://www.swizzleinn.com)

**THE HARBOURFRONT**, Front Street W., Hamilton, Bermuda, Phone: 441-  
295-4207, <http://www.diningbermuda.com/HARBOURFRONT>

## PAGET

**FOURWAYS INN**, 1, Middle Road, PO Box PG 294, Paget PG BX, Bermuda,  
<http://www.fourwaysinn.com>

**HORIZONS & COTTAGES**, 33 South Shore Road, Paget, PG04, Bermuda,  
Tel: 441-236-0048, Fax: 441-236-1981, [reservations@horizons.bm](mailto:reservations@horizons.bm),  
<http://www.horizonscottages.com>

## PEMBROKE

**ASCOTS RESTAURANT**, 24 Rosemont Avenue, Pembroke HM 06, Tel:  
1.441.295.9644, Fax: 1.441.292.4986, [info@ascots.bm](mailto:info@ascots.bm),  
<http://www.ascots.bm/New/profile.htm>

## SOUTHAMPTON

**BACCI**, 101 South Shore Road, The Fairmont Southampton, Hamilton,  
Bermuda SN 02, phone: +1 441 238 8000, fax: +1 441 238 8968, email:  
[southampton@fairmont.com](mailto:southampton@fairmont.com), <http://www.fairmont.com/southampton>





**WATERLOT INN RESTAURANT**, The Fairmont, 101 South Shore Road, Southampton, Bermuda, SN02, TEL (441) 238-8000, [southampton@fairmont.com](mailto:southampton@fairmont.com), <http://www.fairmont.com/southampton>

## ENTERTAINMENTS

### BERMUDA

**BERMUDA AQUARIUM, NATURAL HISTORY MUSEUM & ZOO**, Mailing Address: Bermuda Zoological Society, P.O. Box FL 145, Bermuda, Location address: 40 North Shore Road, Flatts FL04 Bermuda, [info.bzs@gov.bm](mailto:info.bzs@gov.bm), <http://www.bamz.org>

**OCEAN VIEW GOLF COURSE**, 2 Barkers Hill, Devonshire DV 05, Bermuda, Postal Address: P.O. Box DV 358, Devonshire DV BX, Bermuda, Tel: (441) 295-9092, Fax: (441) 295-9097, Email: [ovgc@bermudagolf.bm](mailto:ovgc@bermudagolf.bm), <http://www.oceanview.golf.bm>

**TUCKER'S POINT CLUB**, P.O. Box HS 85, Harrington Sound, HS BX Bermuda, PHONE: (441) 298-6915, [sales@tuckerspoint.com](mailto:sales@tuckerspoint.com), <http://tuckerspoint.com>

### HAMILTON

**AQUATIC BERMUDA**, Suite 240, 12 Church St, Hamilton HM11, Bermuda, PHONE: (441) 236-2200, Attraction type: Group tour/boat, Email: [aquaticbermuda@logic.bm](mailto:aquaticbermuda@logic.bm), <http://www.aquaticbermuda.com>

**BERMUDA UNDERWATER EXPLORATION INSTITUTE**, P.O. Box HM 1745, Hamilton HM GX, Bermuda, Phone: (441) 292-7219, Fax: (441) 236-6141, [info@buei.org](mailto:info@buei.org), <http://www.buei.org>

**BLUE HOLE WATER SPORTS**, P.O. Box FL6 Flatts, FLBX, Bermuda, Telephone: (441) 293-2915, or (441) 293-8333 ext. 37, Email: [bluehole@northrock.bm](mailto:bluehole@northrock.bm), <http://www.blueholewater.bm>

**CRYSTAL & FANTASY CAVES**, 8 Crystal Caves Road, Hamilton Parish CR 04, Bermuda, Telephone: 441-293-0640, Fax: 441-293-7334, Email: [info@caves.bm](mailto:info@caves.bm), <http://www.caves.bm>

**RESTLESS NATIVE CATAMARAN**, Somerset Bridge, Hamilton, Bermuda, Phone: 1 441 5318149, [restless@logic.bm](mailto:restless@logic.bm), <http://www.restlessnative.bm>

### SANDYS



Tel: 441 234 3145,  
<http://www.bdawatersports.com>

### SOUTHAMPTON

**POMPANO BEACH CLUB**, 36 Pompano Beach Road, Southampton SB 03 Bermuda, Contact Managers Larry or Tom Lamb, Telephone 441-234-0222, Fax 441-234-1694, Attraction type: Water park, Email [pompano@ibl.bm](mailto:pompano@ibl.bm), <http://www.pompano.bm>

**THE FAIRMONT**, Southampton Princess Golf Club, 101 South Shore Road, Southampton, Bermuda, TEL (441) 238-8000, FAX (441) 238-8968, E-MAIL [southampton@fairmont.com](mailto:southampton@fairmont.com), <http://www.fairmont.com/Southampton>

### ST. GEORGE

**SEGWAY OF BERMUDA**, Address: King's Wharf St. George, Bermuda, Tel: (441) 504-2581, Attraction type: Tour, [robert@segway.bm](mailto:robert@segway.bm), <http://www.bermuda.com/segway>



### TUCKER'S TOWN



*Mid Ocean Golf Club*  
1 Mid Ocean Drive Tucker's Town HM GX  
Bermuda  
Phone: 441.293.0330  
FAX: 441.293.8837  
EMAIL: [info@themidoceanclubbermuda.com](mailto:info@themidoceanclubbermuda.com)  
<http://www.themidoceanclubbermuda.com>

### WARWICK

**BELMONT HILLS GOLF CLUB**, 25 Belmont Hills Dr, Bermuda, Tel: 441-236-6400, Fax: 441-236-0694, [golf@belmonthills.com](mailto:golf@belmonthills.com), <http://www.newsteadbelmonthills.com/golf>

**RIDDELL'S BAY GOLF & COUNTRY CLUB**, Warwick, 24 Riddell's Bay Road, Bermuda, Phone: 441 238 1060, Fax: 441 238 8785, [clubsec@riddellsbay.com](mailto:clubsec@riddellsbay.com), <http://www.riddellsbay.com>

**JESSIE JAMES CRUISES**, 6 Glen Court, Warwick, PG01, Bermuda, T: (441) 236-4804, Fax: (441) 236-6259, Attraction type: Group tour/boat, [jessiejames@northrock.bm](mailto:jessiejames@northrock.bm), <http://www.jessiejames.bm>

## HORSEBACK HOLIDAYS

### HAMILTON

**SPICELANDS RIDING CENTRE**, Hamilton, P.O. Box 1980, Hamilton HM HX, Bermuda, Tel: 441-238-8212, Fax: 441-295-4946, <http://www.spicelandsriding.com>

## MUSEUMS/GALLERIES

### BERMUDA

**BERMUDA ARTS CENTRE**, PO Box MA 66, Mangrove Bay, MA BX, Bermuda, Phone: 441-234-2809, Fax: 441-234-0540, Email: [artcentre@ibl.bm](mailto:artcentre@ibl.bm), <http://www.artbermuda.bm>

**THE MICHAEL SWAN GALLERY**, Bermuda, [michael@michaelswan.com](mailto:michael@michaelswan.com), <http://www.michaelswan.com>

### HAMILTON

**BERMUDA SOCIETY OF THE ARTS HAMILTON**, The City Hall Arts Centre, 17 Church Street, Hamilton HM 11 Bermuda, Tel: 441 2923824, [info@bsoa.bm](mailto:info@bsoa.bm), <http://www.bsoa.bm>

**BERMUDA NATIONAL GALLERY**, Mailing address: Suite 191, 48 Par-la-Ville Road, Hamilton HM 11, Bermuda, Telephone: (441) 295-9428, Fax: (441) 295-2055, E-mail: [director@bng.bm](mailto:director@bng.bm), Web site: [www.bng.bm](http://www.bng.bm)

**WINDJAMMER II GALLERY**, Fairmont Hamilton Princess, Pitts Bay Road, Hamilton, Phone: 441 2951783, [windjammer2@logic.bm](mailto:windjammer2@logic.bm), <http://www.windjammer2.com>

### SANDYS

**BERMUDA MARITIME MUSEUM**, Regular mail: P.O. Box MA 133, Sandys MA BX, Bermuda, Courier: 1, The Keep, Sandys MA 01, Bermuda, T: 1-441-234-1333, Fax: 1-441-234-1735, Email: [info@bmm.bm](mailto:info@bmm.bm), Web: [www.bmm.bm](http://www.bmm.bm)

**SMITH'S PARISH**

**VERDMONT HISTORIC HOUSE MUSEUM**, 6 Vermont Lane, Collector's Hill, Smith's Parish, Tel.: (441) 236-7369, E-mail: [palmetto@bnt.bm](mailto:palmetto@bnt.bm), [http://www.bnt.bm/Places\\_to\\_Visit/verdmont\\_museum.htm](http://www.bnt.bm/Places_to_Visit/verdmont_museum.htm)

**SOUTHAMPTON**

**THE SHARON WILSON ART GALLERY**, 2 Turtle Place, Southampton, SN03, Bermuda, Tel: 441 2382583, <http://bermuda-art.com>

**ST. GEORGE**

**BERMUDA NATIONAL TRUST**, P.O. Box HM 61, Hamilton, HM AX, Bermuda, Tel. (441) 236-6483, Fax. (441) 236-0617, Attraction type: Architectural building; History museum, Email: [palmetto@bnt.bm](mailto:palmetto@bnt.bm), <http://www.bnt.bm>

**DIVING SCHOOLS****HAMILTON PARISH**

**TRIANGLE DIVING**, Address: 11 Blue Hole Hill, Bailey's Bay, Bermuda, Tel: (441) 293-7319, <http://trianglediving.com>

**SOUTHAMPTON**

**BLUE WATER DIVERS & WATERSPORTS LTD.**, PO Box SN165, Southampton SNBX, BERMUDA, Phone:(441) 234 1034, (441) 232 2909, Fax:(441) 232 3670, <http://www.divebermuda.com>

**HEALTH CLUBS / SPAAS****BERMUDA**

**BERSALON SPAS & SALONS OF BERMUDA**, Front Street West, Hamilton HM 08, Bermuda, Phone: (441) 292-8570, E-mail: [info@bermudaspasandsalons.com](mailto:info@bermudaspasandsalons.com), <http://www.bermudaspasandsalons.com>

**HAMILTON**

**ARIEL SANDS**, 34 Shore Road, Devonshire, P.O. Box 334, Hamilton HM BX, BERMUDA, Tel: 441.236.1010, Fax: 441.236.0087, <http://www.arielsands.com>

**PAGET PARISH**

**ELBOW BEACH BERMUDA**, 60 South Shore Road Paget Parish, Bermuda, Tel:1 441 236 3535, [reservations@elbowbeachbermuda.com](mailto:reservations@elbowbeachbermuda.com), <http://www.elbowbeachbermuda.com>

**SOUTHAMPTON PARISH**

**THREE GRACES DAY SPA, SERENITY**, 36 Pompano Beach Road, SB 03, Bermuda, Phone: 441 234 0333, [serenity@ThreeGracesDaySpa.com](mailto:serenity@ThreeGracesDaySpa.com), <http://www.threegracesdayspa.com>

**NIGHT CLUBS & DISCOS****HAMILTON**

**DOCKSIDER**, 121 Front Street, Hamilton HM 19, Bermuda, Phone: 441 296 3333, [docksider@logic.bm](mailto:docksider@logic.bm), <http://docksider.bm>

**LEOPARDS CLUB**, 12 Brunswick Street, Hamilton, HM 10, Phone: 295-6434

**LEVEL CLUB**, Hamilton City, Bermuda, Phone: 441 292 4507, [level@northrock.bm](mailto:level@northrock.bm), [http://www.bermuda-attractions.com/bermuda\\_0002f1.htm](http://www.bermuda-attractions.com/bermuda_0002f1.htm)

**LIGHT NIGHT CLUB**, At The White Horse, 8 King Square, St. George's GE 05, Phone: 441-297-1838, [www.whitehorsebermuda.com](http://www.whitehorsebermuda.com)

**LV'S PIANO AND JAZZ LOUNGE**, Tel: 441-296-3330, Fax: 441-295-8977, E-mail: [LVsmanager@littlevenice.bm](mailto:LVsmanager@littlevenice.bm), Websites: [www.diningbermuda.com](http://www.diningbermuda.com), [www.littlevenice.bm](http://www.littlevenice.bm)

**ROBIN HOOD PUB HAMILTON**, 25 Richmond Road, Pembroke, Bermuda, Tel:441 295 3314, <http://www.robinhood.bm>

**THE PICKLED ONION**, 53 Front Street, Hamilton, Bermuda, T: 1 441 2952263, [pickledonion@irg.bm](mailto:pickledonion@irg.bm), <http://www.thepickledonion.com>

**HAMILTON PARISH**

**SWIZZLE INN HAMILTON PARISH**, Tel: 441 2931854, [info@swizzleinn.com](mailto:info@swizzleinn.com), <http://www.swizzleinn.com>

**SOMERSET VILLAGE**

**CALICO JACK'S FLOATING BAR**, Heritage Wharf Dockyard, Somerset Village HM08, Bermuda, Phone:1 441 504 5225, [nindo@calicojacksbermuda.com](mailto:nindo@calicojacksbermuda.com)

With Intercontex H&T You Can Tour The World

**BUS & RAILWAY STATIONS**

**BERMUDA DEPARTMENT OF PUBLIC TRANSPORTATION**, P. O. Box HM 443, Hamilton HM BX, Bermuda, Tel:441 292 3851, Fax:441 292 9996, [info@dpt.bm](mailto:info@dpt.bm), <http://www.bermudabuses.bm/portal/server.pt>

**CAR HIRE/TAXIS/SERVICES**

**BERMUDA ISLAND TAXI**, 52 North Street, Pembroke HM 19, Tel: 441 295 4141, [its@cwbda.bm](mailto:its@cwbda.bm), <http://www.bermudaislandtaxi.com>

**BIU CO OP TAXI TRANSPORTATION SERVICE**, The Christensen Building, 55 Dundonald Street, Pembroke, Tel: 441 292 4476, [cooptaxi@fkbnet.bm](mailto:cooptaxi@fkbnet.bm)

**BTA (DISPATCHING) LTD.**, No. 3 Cahow Way, L.F. Wade International Airport, St. George's DD 03, Tel: 441 296 2121, [info@taxibermuda.bmWeb](mailto:info@taxibermuda.bmWeb), <http://www.taxibermuda.bm>

**FERRIES**

**BELMONT FERRY DOCK**, Harbour Road, Warwick, [http://www.seaexpress.bm/ferries\\_about.aspx](http://www.seaexpress.bm/ferries_about.aspx)

**CAVELLO BAY FERRY DOCK**, Long Point Lane and Scotts Hill Road, Sandys, [http://www.seaexpress.bm/ferries\\_about.aspx](http://www.seaexpress.bm/ferries_about.aspx)

**DARRELL'S WHARF**, Harbour Road between Morgan Road and Cobb's Hill Road, Paget, [http://www.seaexpress.bm/ferries\\_about.aspx](http://www.seaexpress.bm/ferries_about.aspx)

**DOCKYARD FERRY DOCK**, Dockyard Terrace, Sandys, [http://www.seaexpress.bm/ferries\\_about.aspx](http://www.seaexpress.bm/ferries_about.aspx)

**HAMILTON FERRY TERMINAL**, 8 Front Street, Pembroke, City of Hamilton, Tel: 441 295 4506, [http://www.seaexpress.bm/ferries\\_about.aspx](http://www.seaexpress.bm/ferries_about.aspx)

**HODSON'S FERRY**, Harbour Road and Chapel Road, Paget, [http://www.seaexpress.bm/ferries\\_about.aspx](http://www.seaexpress.bm/ferries_about.aspx)

**LOWER FERRY DOCK**, Harbour Road, Paget, [http://www.seaexpress.bm/ferries\\_about.aspx](http://www.seaexpress.bm/ferries_about.aspx)

**CRUISE & SHIPPING LINES**

**AZAMARA CLUB CRUISES**, Azamara Journey, Tel:1 954 628 9708, Fax 1 954 628 9622, [AzamaraGuestRelations@AzamaraClubCruises.com](mailto:AzamaraGuestRelations@AzamaraClubCruises.com), [www.AzamaraClubCruises.com/life-onboard/special-needs](http://www.AzamaraClubCruises.com/life-onboard/special-needs)

**CARNIVAL CRUISE LINE**, ms Holiday, Tel: +1-242 1103216, Fax: +1-242 1103216, [www.carnival.com](http://www.carnival.com)

**CRYSTAL CRUISES**, 11755 Wilshire Blvd., Suite 900, Los Angeles, CA 90025, 1-310-785-9300, [marketing2@crystalcruises.com](mailto:marketing2@crystalcruises.com), <http://www.crystalcruises.com>

**CUNARD**, Tel: 0207 940 5391, 0843 374 2224, [michael.gallagher@cunard.co.uk](mailto:michael.gallagher@cunard.co.uk), <http://www.cunard.co.uk>

**HOLLAND AMERICA LINE GUEST RELATIONS**, 300 Elliott Avenue West, Seattle, WA 98119, Phone: 800-547-8493, Fax: 206-905-8962, [guestrelations@hollandamerica.com](mailto:guestrelations@hollandamerica.com), <http://www.hollandamerica.com>

**NORWEGIAN CRUISE LINE**, ms Norwegian Crown, Tel: 1 242 1104673, Fax: 1 242 1104674, <http://www.ncl.com>

**P&O CRUISES**, Carnival House, 100 Harbour Parade, Southampton, SO15 1ST, Tel: 0843 374 0111, Fax: 023 8065 7030, <http://www.pocruises.com>

**ROYAL CARIBBEAN INTERNATIONAL**, Crown & Anchor Society, P.O. Box 026053, Miami, FL 33102-6053, [reservationroyal@rcci.com](mailto:reservationroyal@rcci.com), <http://www.royalcaribbean.com>

**SEABOURN CRUISE LINE LIMITED.**, 300 Elliott Avenue West, Seattle, WA 98119 USA, Tel:0843 373 2000, <http://www.seabourn.com/luxury-cruise-vacation-onboard/Spirit>

**SILVERSEA CRUISES, SILVER CLOUD**, Gildo Pastor Center, 7, Rue du Gabian, 98000 Monaco, Phone: 377 9770 2424, Fax: 377 9770 2428, <http://www.silversea.com>

**WINDSTAR CRUISES**, Phone: 888 746 5284, Fax: 206 733 2790, [info@windstarcruises.com](mailto:info@windstarcruises.com), <http://www.windstarcruises.com>

**SHOPPING CENTRES & MALLS****HAMILTON**

**FLYING COLOURS**, Riihiluoma's Flying Colours, 5 Queen St., Hamilton, Bermuda, Tel: 441 295 0890, Fax: 441 292 9028, <http://www.flyingcolours.bm>

**SANDYS PARISH**

**CLOCKTOWER MALL**, Royal Naval Dockyard, Bermuda

**ST. GEORGE**

**BERMUDA PERFUMERY**, Stewart Hall 5 Queen Street, St. George, Bermuda, Phone: 441 2930627, [info@bermuda-perfumery.com](mailto:info@bermuda-perfumery.com)